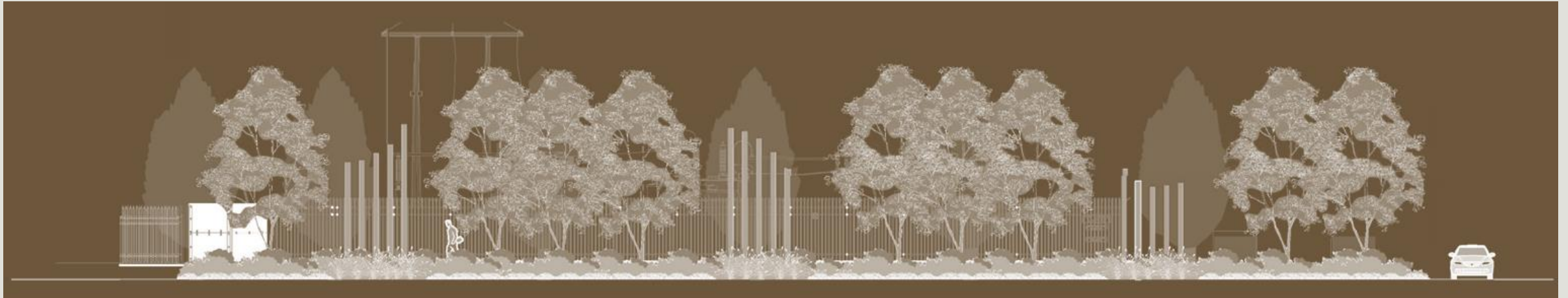


PORT GARDNER SUBSTATION

Presentation to Northwest Neighborhood Everett



Tom Hovde
Strategic accounts

6/21/2018

Energy Planning & Forecasting

Snohomish PUD:

- 12th largest publicly owned utility in the US
- Approximately 341,000 electric customers
- Service territory of 2,200 square miles
- Expects about 20,000 new customers over next 7 years

Power Planning Basics:

- PUD forecasts load growth areas and determines the infrastructure needed to accommodate the growth
- For electrical energy forecasting/planning, we use units of “MVA”
 - 1 MVA = 1 million volt-amps or approximately 1,000 kilowatts
 - 1 MVA is enough to power approximately 700 homes
- Port Gardner Substation will provide approximately 16 MVA of available power.



Summary

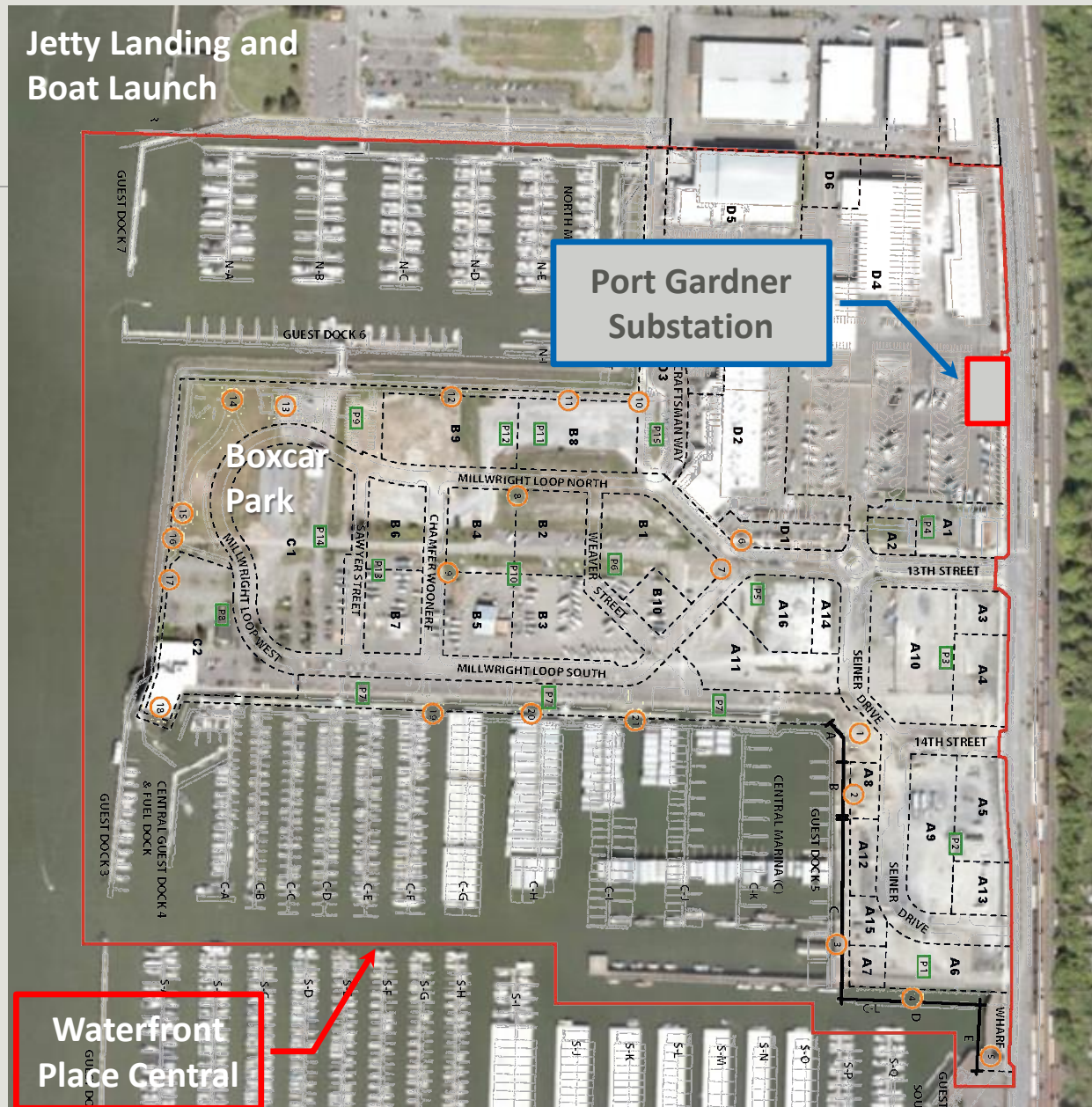
Location

- 1210 W. Marine View Drive, Everett
- Selected by PUD and the Port of Everett after a thorough review of potential sites.

Purpose

- To construct and maintain an electric utility substation that will provide additional electrical capacity and reliable electric service to serve the Everett waterfront and surrounding area

Jetty Landing and Boat Launch



Location

Within the
Craftsman District
at Waterfront Place
Central



Location

Facing west from
Grand Avenue toward
the substation site

The Port's boatyard
will remain as part of
the Craftsman District



Visualization

This is an approximate rendering of the future substation.

Not shown:

- landscaping
- driveway
- padmount switches (“green boxes”)



Local Jurisdictions & Key Issues

Permit Authority: City of Everett

Landowner: Port of Everett

- PUD is acquiring a permanent easement for this site due to environmental cleanup status

Streets & Highways

- Substation fronts West Marine View Drive (SR 529), a “gateway corridor”
- Enhanced landscaping required due to gateway corridor status

Other Jurisdictions / Overlays

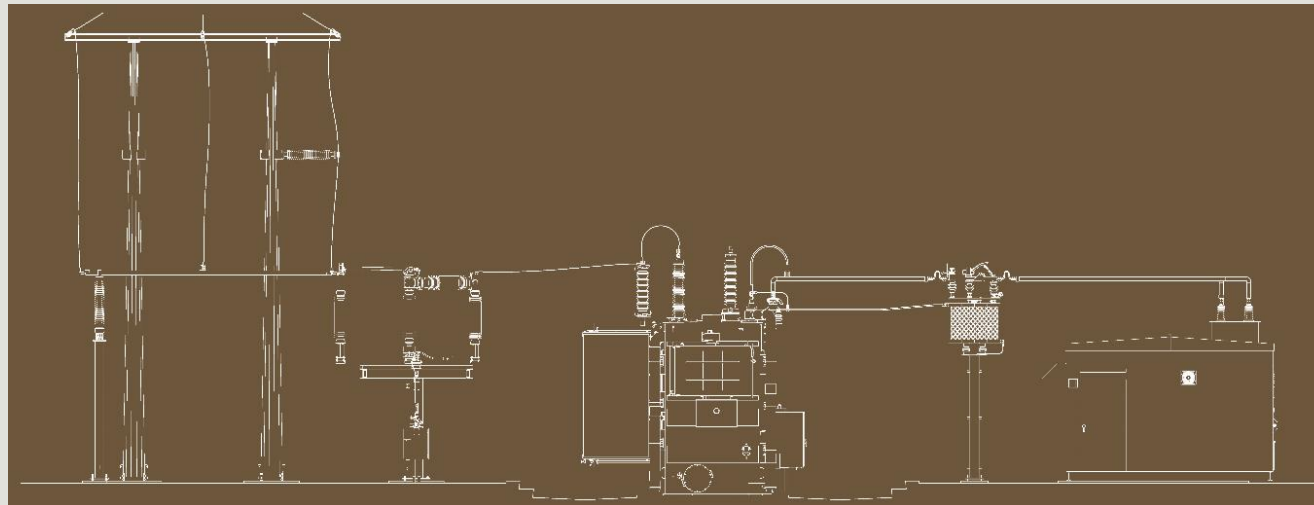
- Port of Everett is reviewer for the Waterfront Central Planned Development Overlay Zone (PDO-WC)
- Port is reviewing PUD plans as the project progresses



Enhanced Landscaping Includes Faux Masts



32 ft.
Dead-End



Substation
behind the
landscaping
and fence

Overview Schedule

Feb-Mar 2018	Utility relocations Gas/Sewer/Storm by Port of Everett contractor
Jan-Apr 2018	Design & Permitting
Apr 2018	Approval of Purchase easement for site from POE
Apr-Aug 2018	Complete Real Estate process, Bid process & contract set-up
Sept-Dec 2018	Civil Construction (fences, foundations, ground grid, vaults)
Jan-Jul 2019	Electrical Assembly & Commissioning (PUD)
Aug– Sept 2019	Energize Substation (best case) (PUD)

Questions?

