

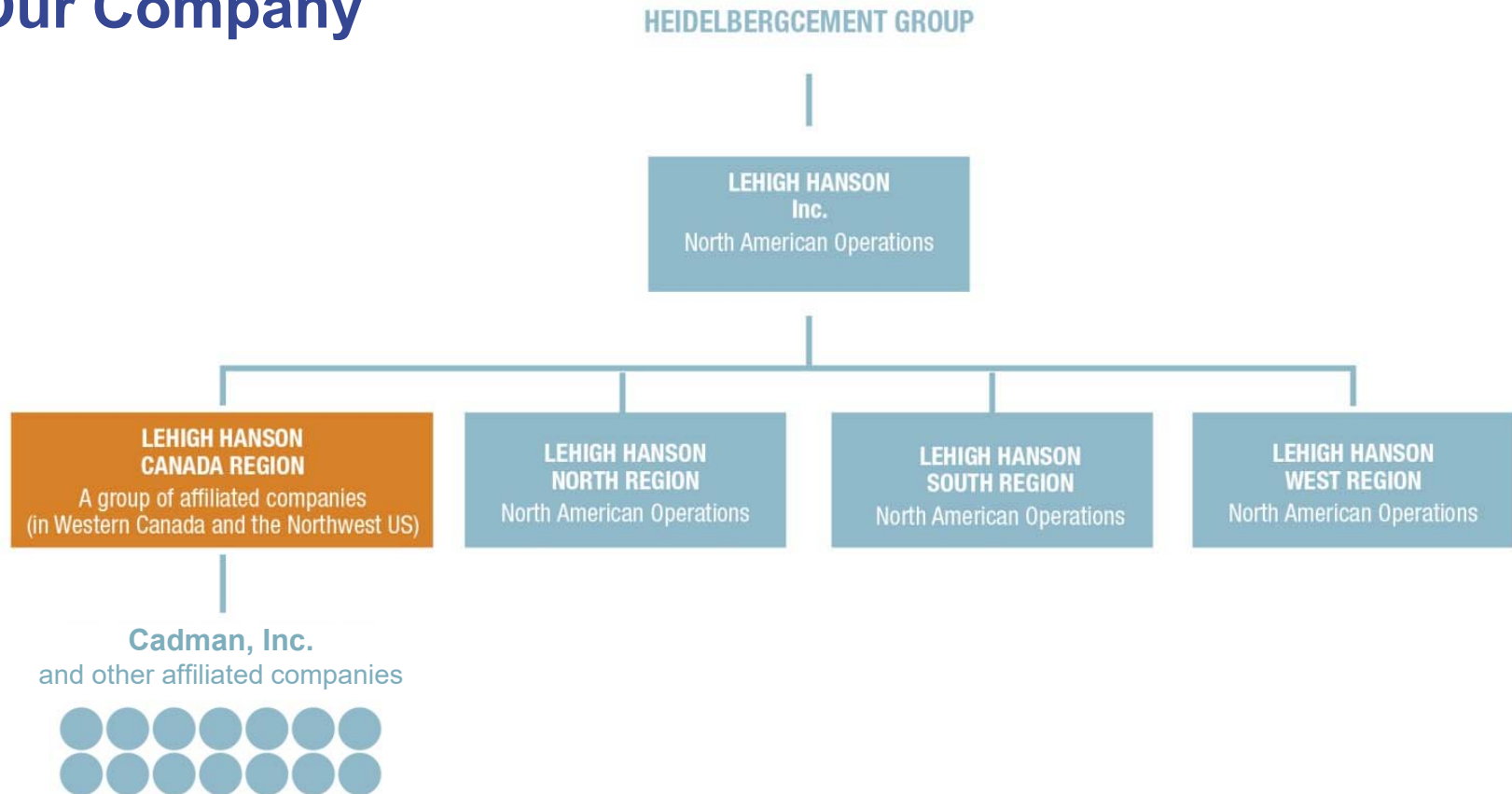


North Everett and Delta Site Projects

Northwest Neighborhood Association

June 21, 2018

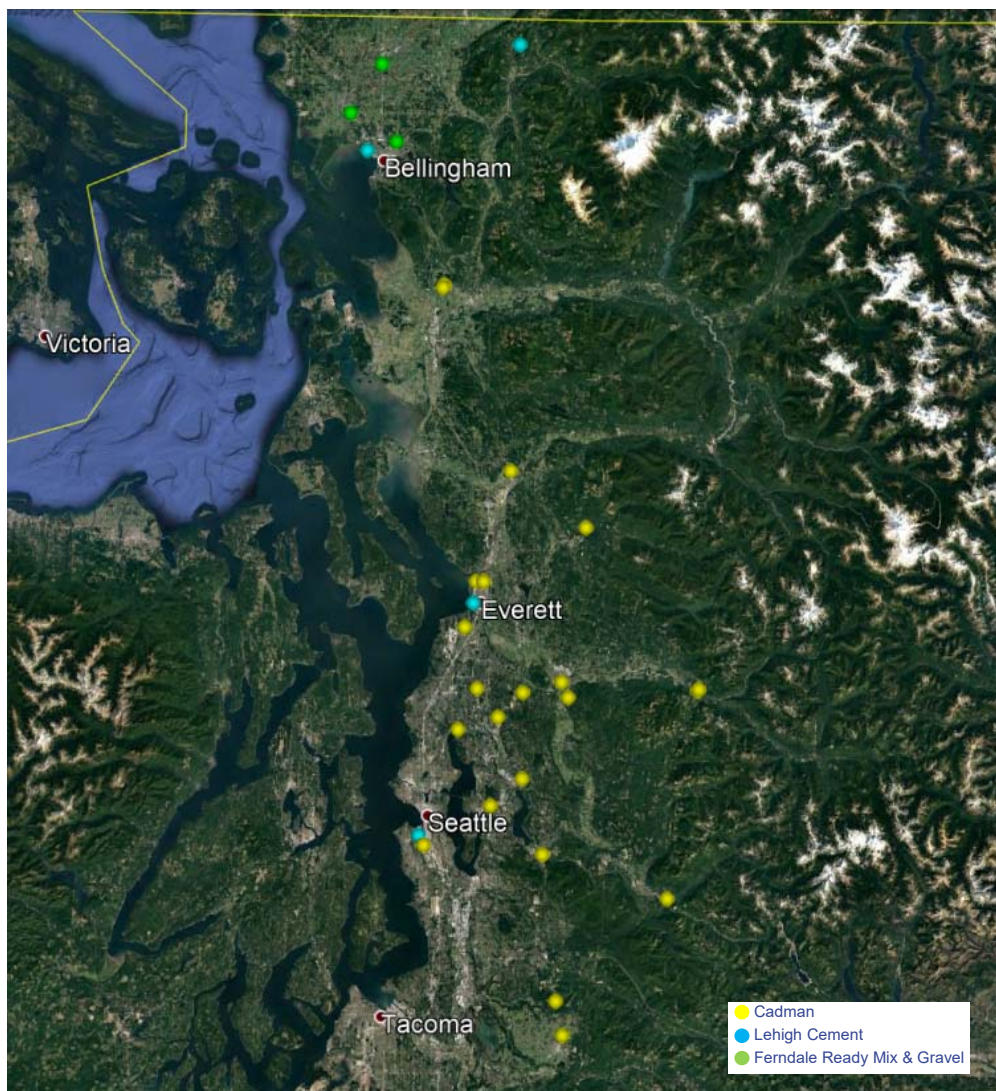
Our Company



Cadman, Inc. is an affiliated company of Lehigh Hanson Canada Region and has 24 active operations throughout Washington and Oregon states to produce concrete and aggregate products to the highest quality and environmental standards.

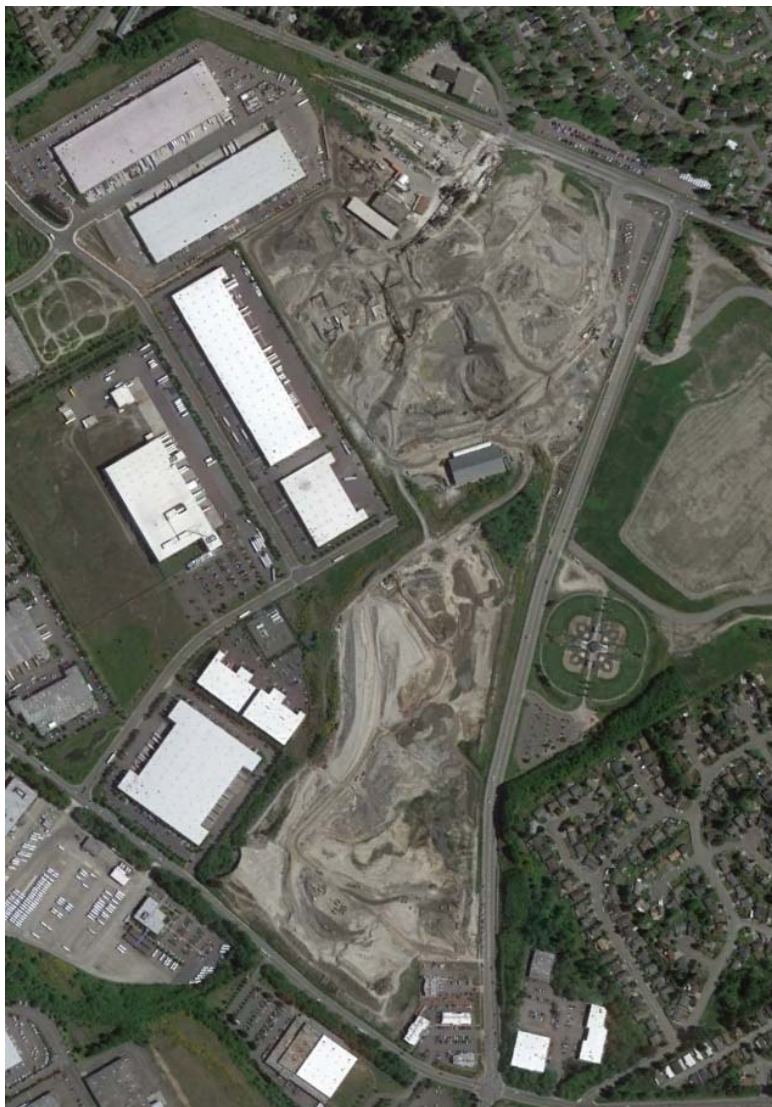
As part of the HeidelbergCement Group, Lehigh Hanson is part of a global network of mines, plants and distribution networks across Europe, Central Asia, Asia Pacific, Africa, and North America.

Where we operate in Washington



| Site | Product | Status |
|--|--------------------------------------|--------------------|
| Lehigh Cement | | |
| Kendall Quarry | Limestone | Inactive |
| Bellingham Grinding Plant Everett Cement Terminal | Cement | Active |
| Ferndale Ready Mix & Gravel | | |
| Bellingham Lynden Ferndale | Concrete | Active |
| Cadman (Washington North) | | |
| Arlington Burlington | Asphalt Aggregate | Inactive |
| Black Diamond | Aggregate Concrete | Active Inactive |
| Delta | Other | Inactive |
| Everett Pit | Aggregate Concrete Soil Burner | Active |
| Enumclaw Gold Bar Granite Falls High Rock North bend | Aggregate | Active |
| Bellevue Issaquah Mill Creek | Concrete | Active |
| Kenmore North Everett | Asphalt | Active |
| Maltby | Aggregate | Inactive |
| Redmond Sky River | Concrete Aggregate | Active Inactive |
| Seattle | Concrete Cement | Active |
| Woodinville | Concrete Asphalt | Active |
| Cadman (Washington South and Oregon) | | |
| Not shown on map - 8 active and 2 inactive sites | | |

Our activities at the Everett Glenwood site



■ Site Features

- Concrete Ready Mix Plant
- Soil Remediation Facility
- Sand & Gravel mine, including a mud press and a wash plant
- Inert Waste Landfill

■ Future of Site

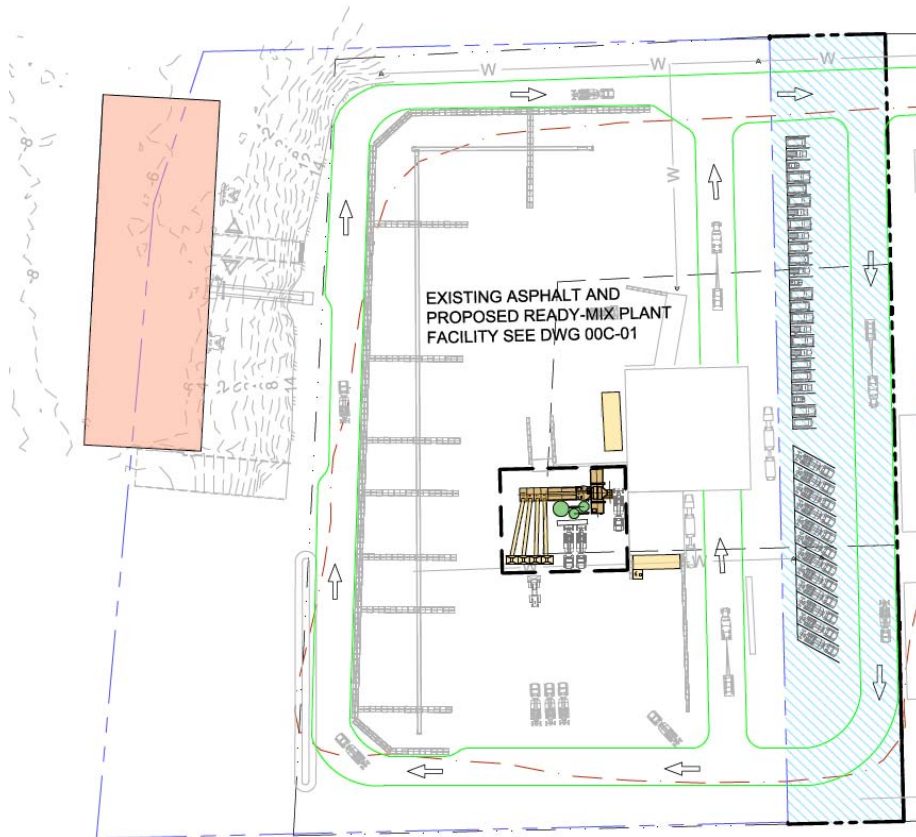
- Complete mining and fill the site
- Relocate existing businesses to alternate locations
- Sell the property

North Everett Ready Mix Project

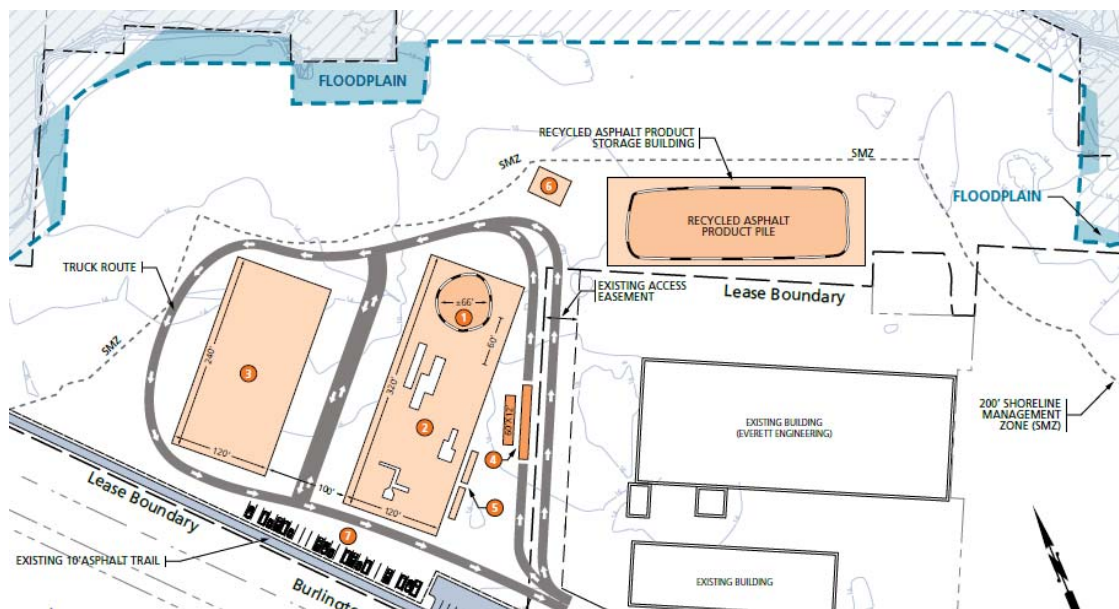
The existing asphalt plant and barge load-out facility has operated at the site since 1994.

Key Project Features

- Co-location of a ready-mix concrete plant with the existing asphalt plant
- Repairs to existing barge berth to allow for import of aggregates by water
- Maintenance dredging at berth to support continuous barge access



Delta Site Improvements



Key Project Features

- Propose the following updates to the operations approved by the existing permit. Phasing refers to when development will occur.

| Item | Current Permit | Proposed Revision |
|---------------------------------------|----------------|-------------------|
| Soil Remediation Facility | ✓ | ✓ |
| Concrete Plant | ✓ | X |
| Barge Off-Loading Facility | ✓ | X |
| Maintenance Shop | ✓ | X |
| Asphalt Plant | ✓ | X |
| Recycled Asphalt Storage and Crushing | X | ✓ |
| Administrative building | ✓ | X |

We want to hear from you!

- **Cadman welcomes interested neighbors to review its proposal and share any questions or concerns.**
- **For questions, comments, or to request a project briefing contact:**

Christy McDonough, Environment Manager
Christy.McDonough@LehighHanson.com
425-698-3226

- **Submit a comment form on the Cadman website at:**
<http://cadman.com/north/projects.php>