

# A NW Everett Neighborhood Association History Presentation By Tim Knopf



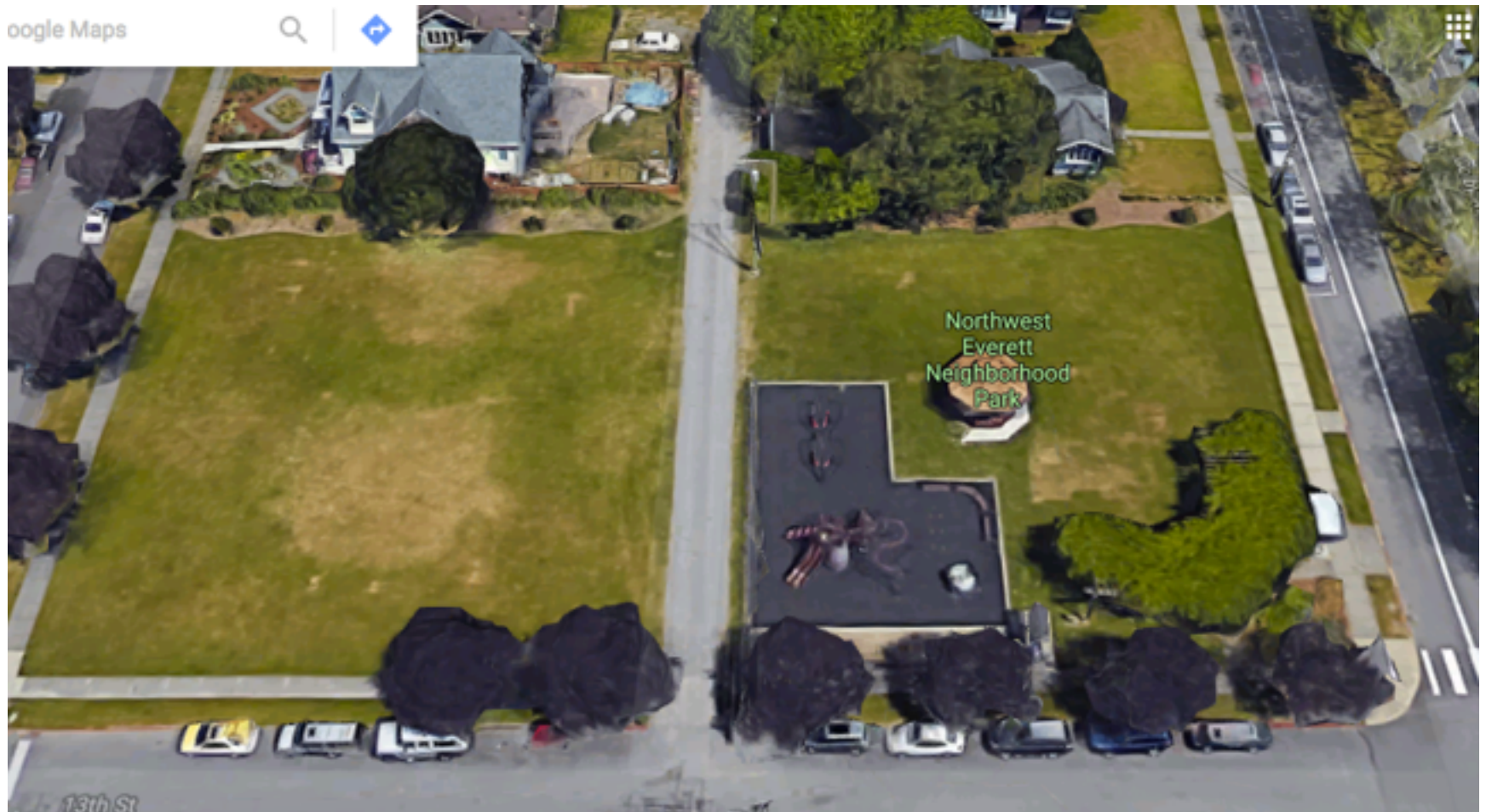
# Special thanks are due to:

- Bill Belshaw
- Falken Forshaw
- Sarah France
- Jeff Hardy
- Dave Koenig
- Deanne Lindstrom
- Wendy McClure
- Kevin Nasr
- Joni Smith
- Mark Soine

# The NW Everett Neighborhood Association: *The Early Days*

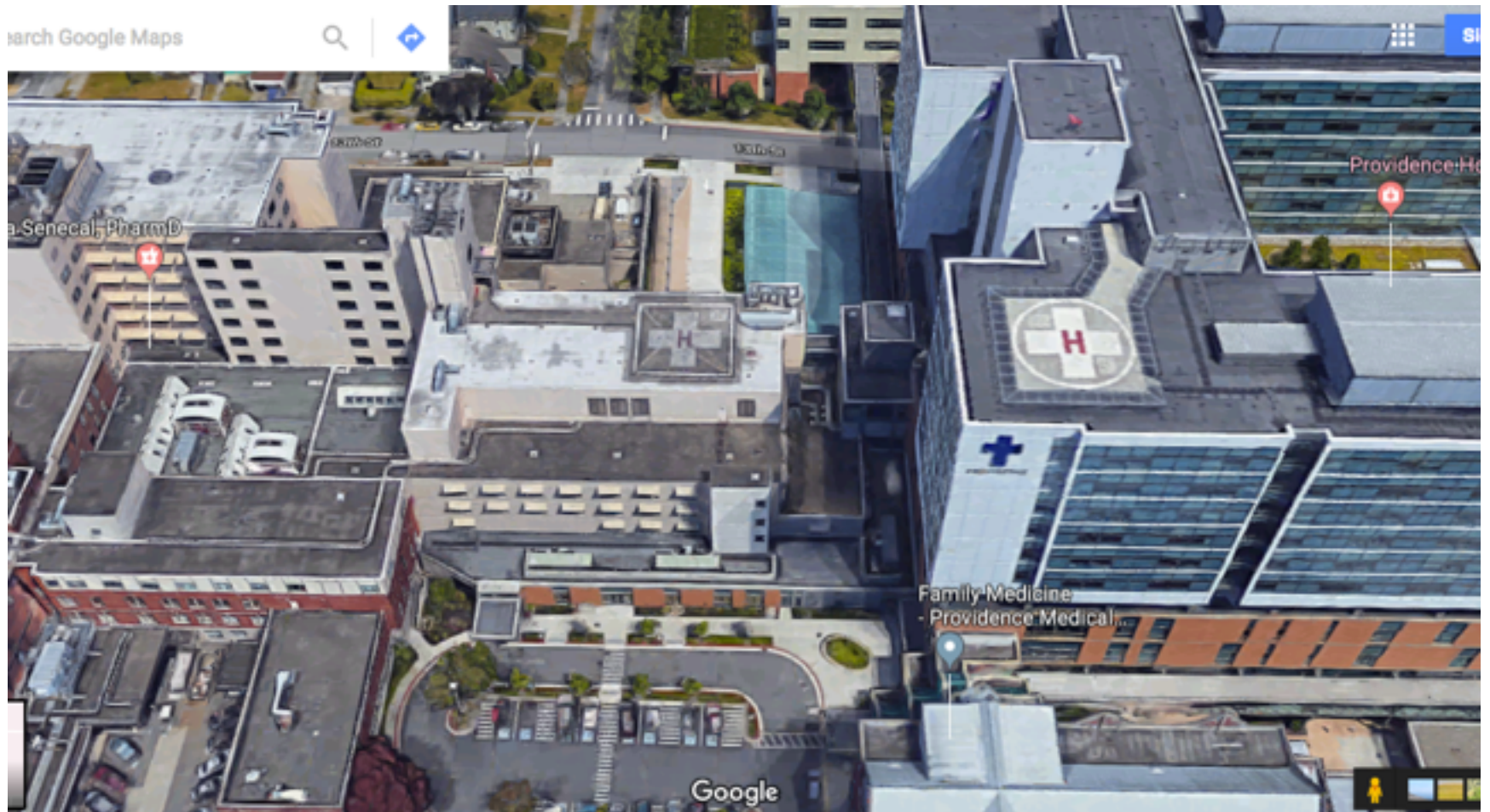


# Neighborhood Ground Zero: Where it all began.

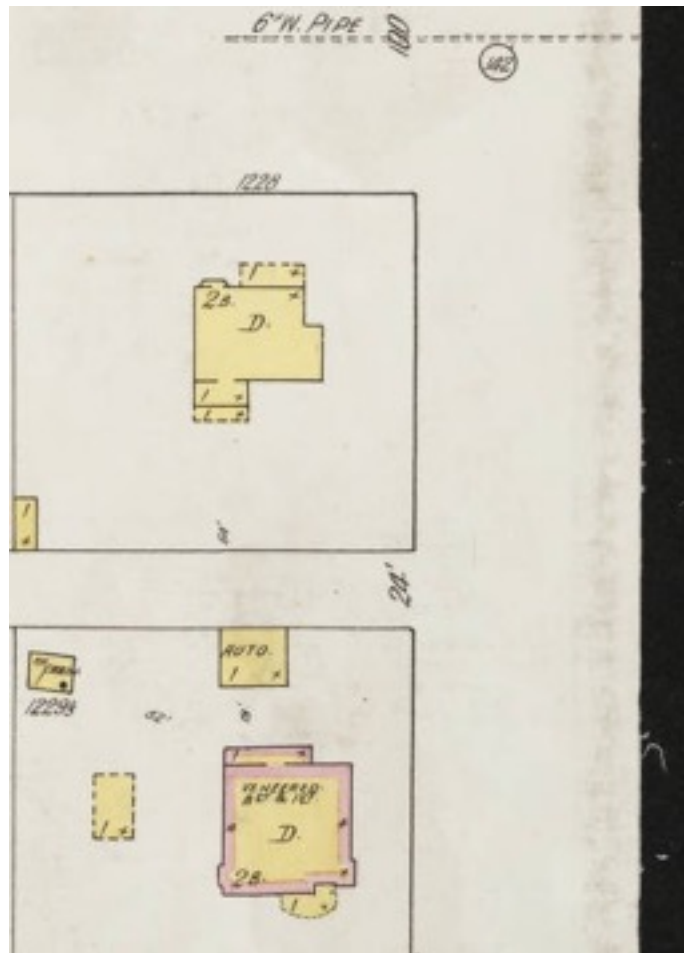




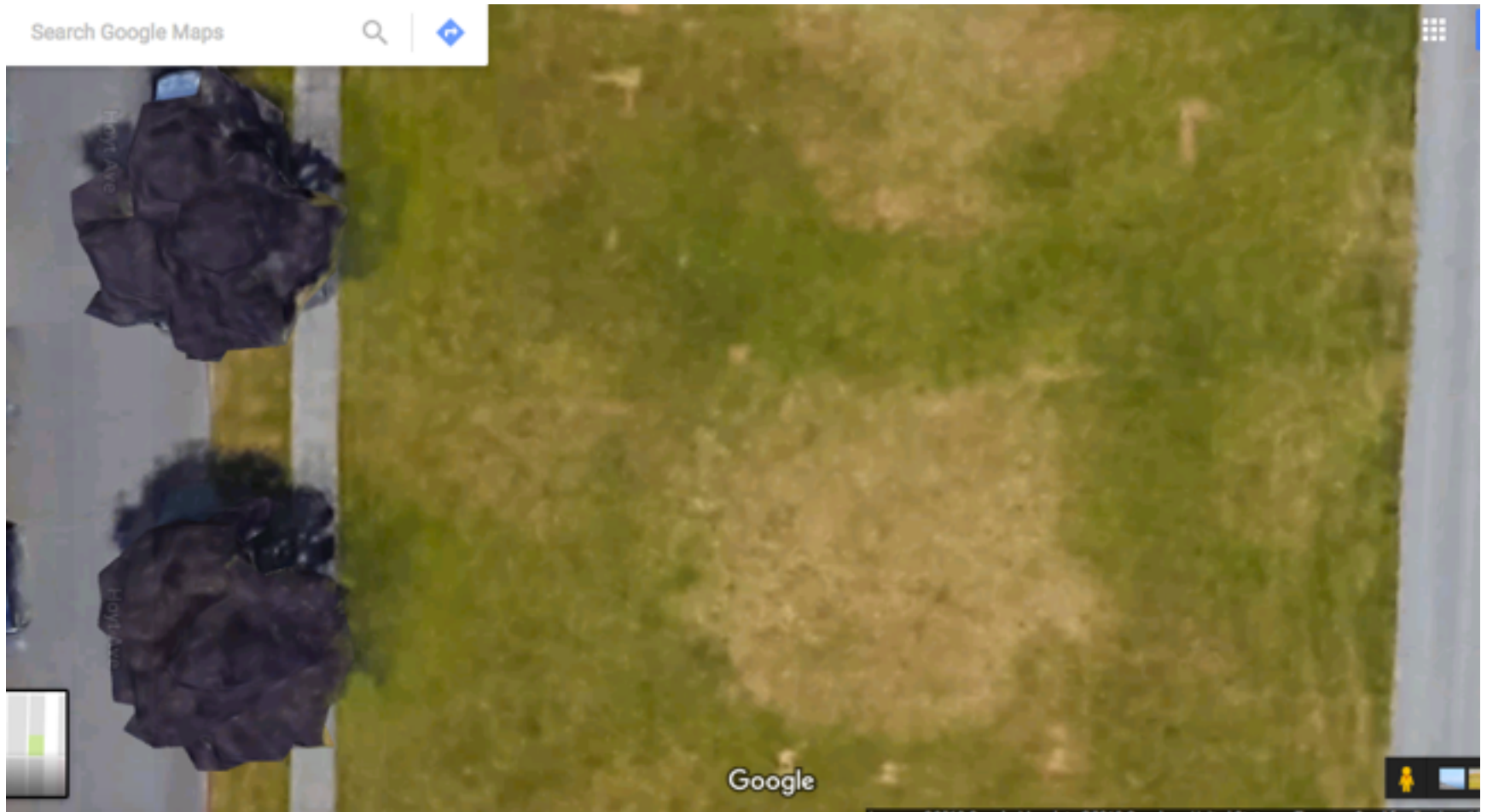
# The Motivating Force



# 13<sup>th</sup> and Colby prior to 1955 (Looking east with Colby at top)



# Traces remain today:



NW Everett Neighborhood's Parents:  
*Deanne Lindstrom and Susan Russell*





# Deanne and Susan's Summer Art School at Deanne's on Rucker



Together they taught Art Workshop to kids ages 6-10 and Art Camp on Wheels to kids 10-14 for 19 years.



**One summer day in 1981 Susan discovered a bulldozer starting work on “Duffy’s Field” across from General Hospital. She ran to warn Deanne of the threat to the neighborhood’s play field.**





The day's art lesson became how to make protest signs and do informational picketing outside the hospital's main entrance. The hospital withdrew its dozer in shame.





Susan's husband, Falken Forshaw, wrote to the Daily Herald, an article was published, and Drew Nielsen, a young neighbor lawyer living on Hoyt got Duffy Field neighbors to add covenants to their deeds prohibiting their homes' future sale to the hospital.



The wounded beast had been forever (?) halted from moving west of Colby Avenue but would keep looking for new space in which to grow.



In 1990 Pete Kinch was elected Everett's Mayor and brought with him new ideas like an Office of Neighborhoods



Pete gave Sarah France the task of writing city legislation to establish an Office of Neighborhoods and a Council of Neighborhoods. She became its first Director.





The first neighborhood associations were formed in 1990 under the umbrella of her office, but NW Everett had not yet joined.

The following neighborhood groups meet on a regular basis. If you are interested in more information or would like to attend a neighborhood meeting in your area, you may contact the following neighborhood representatives.

**PORT GARDNER**

2nd Monday, 7:00 p.m.  
Jackson School Library  
Chairperson — Susan Reichmann  
258-4712

**NORTHEAST EVERETT  
COMMUNITY ORGANIZATION**

3rd Tuesday, 7:00 p.m.  
Housing Authority Building, New Hall  
Chairperson — Viola Oursler  
259-1475

**GREATER RIVERSIDE  
ORGANIZATION**

2nd Tuesday, 7:00 p.m.

**SILVER LAKE ACTION  
COMMITTEE**

1st Thursday, 7:00 p.m.  
Silver Lake Hall at City Beach  
Chairperson — Peggy Claffin  
337-4602

**LOWELL CIVIC ASSOCIATION**

3rd Monday, 7:00 p.m.  
Lowell Community Church Social Hall  
Chairperson — Mary Reardon  
258-9193

Not wanting to miss out, neighbors in NW Everett called for an organizing meeting to be held on June 4, 1990.



That first meeting was held in Legion Hall in North Everett's American Legion Memorial Park.





Neighbors packed the building's interior eager to learn more about this new concept and get organized.





A full agenda awaited neighbors who packed the hall to bring a new neighborhood association into the world.



By-laws were approved and officers elected: Falken Forshaw-Chair, Mark Soine Vice-Chair, Tim Knopf-Secretary and Drew Nielsen-Treasurer (as long as there wasn't any money).

**BY-LAWS OF NORTHWEST EVERETT NEIGHBORHOOD ASSOCIATION**

**I. MEETINGS**

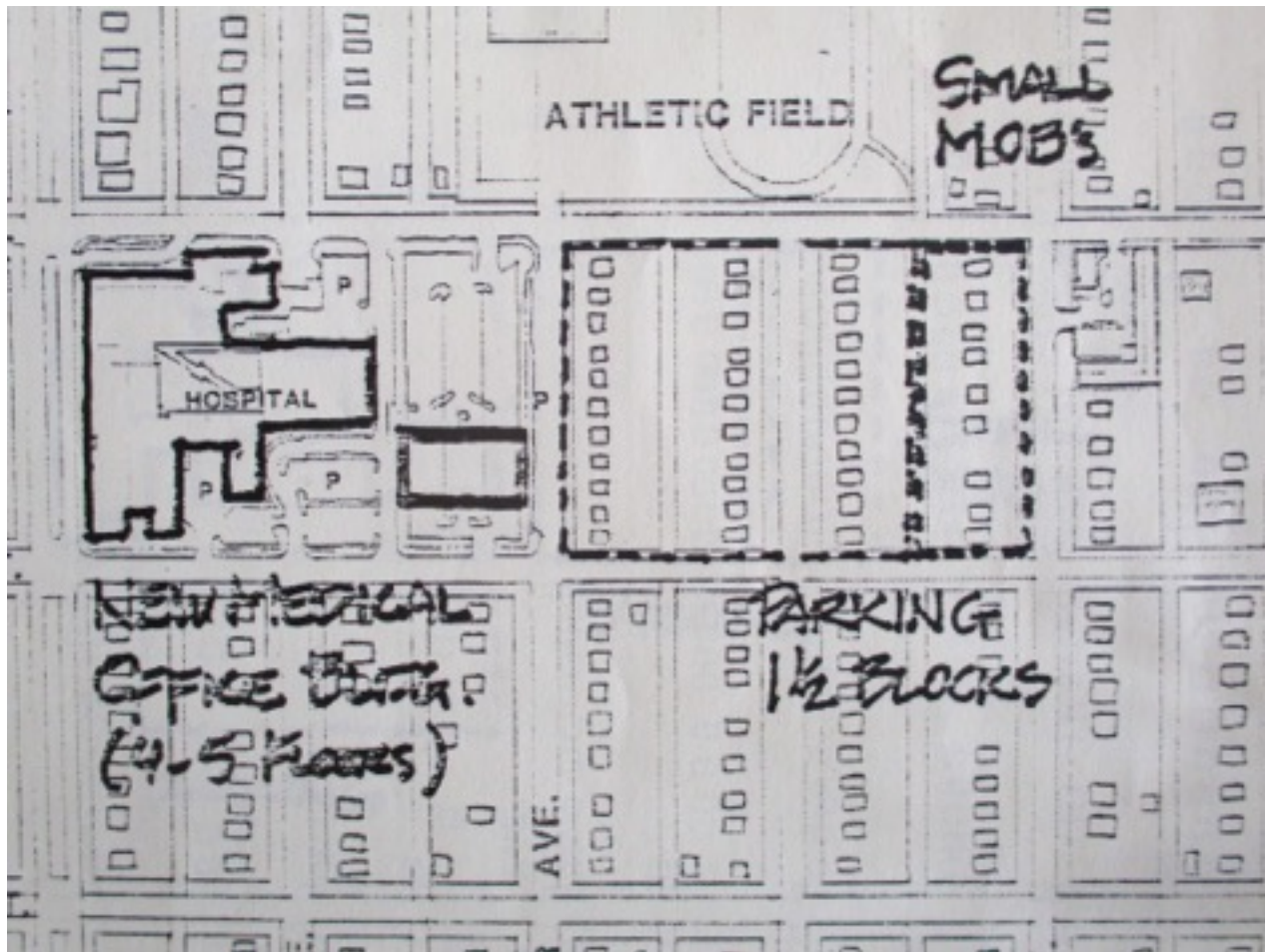
The Northwest Everett Neighborhood Association shall meet on the fourth Wednesday of each month at 7:00 pm; provided, however, that it shall be within the power of the chairperson to postpone, reschedule or cancel meetings where the regular meeting date conflicts with holidays or for other good and sufficient reason.

Northwest Everett Neighborhood Association meetings shall be open to the public.

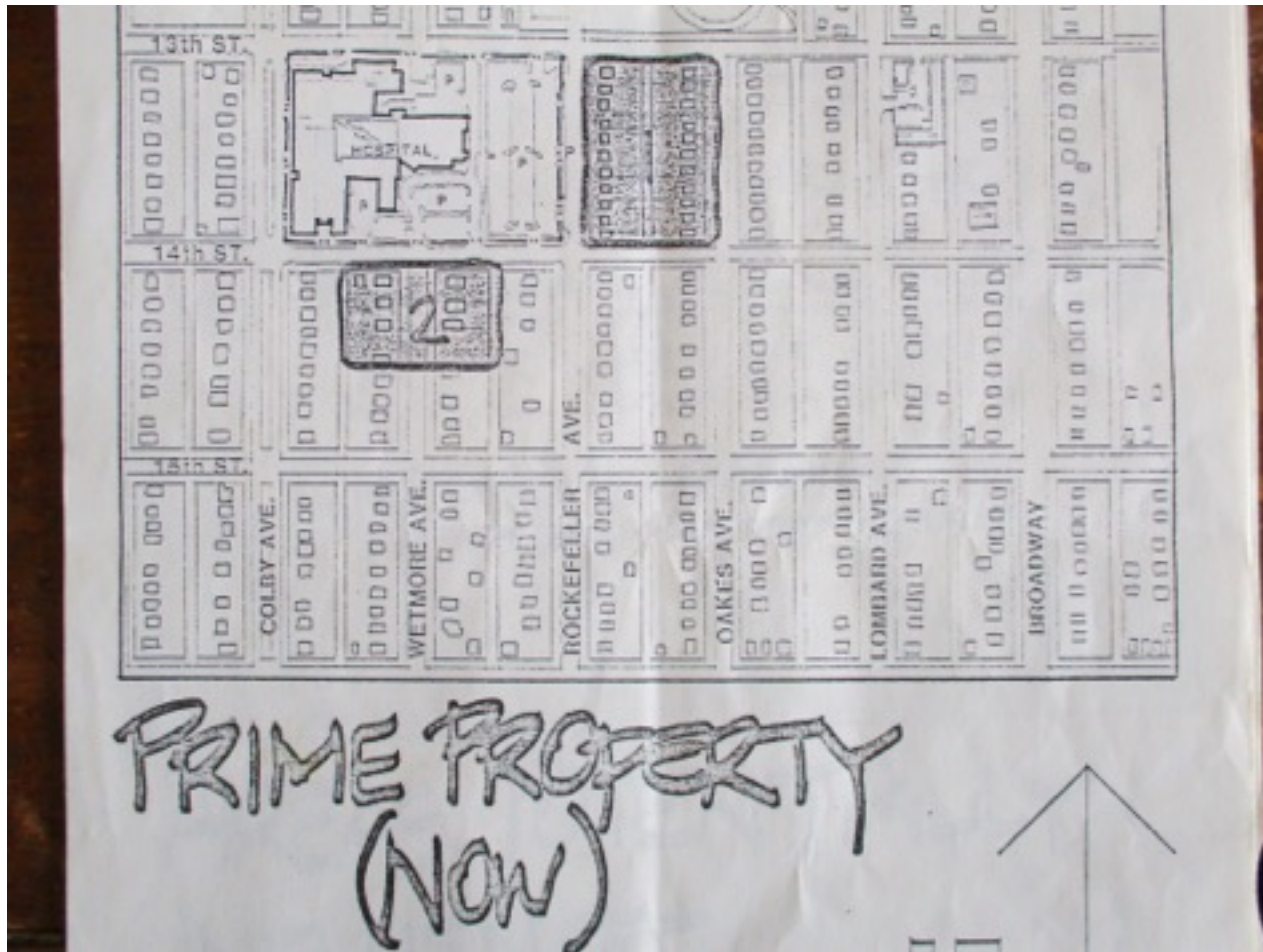
**II. OFFICERS**

The officers shall be a Chair, Vice-Chair, Secretary, Treasurer, and two delegates to the Council of Neighborhoods; provided, however, that delegates to the Council of Neighborhoods shall not hold any other office of the Association. Officers shall be elected by simple majority of the members voting at the regular meeting of the Association held each November, with the term of office to extend from January 1 through December 31 of the following year. There shall be no limit on the number of successive terms any person may occupy an office of the Association. In the year in which the Association is formed, interim officers may be elected at a regular meeting to serve until January 1, 1991. Any vacancy of any office of the Association may be filled for the remainder of the term of office by a special meeting.

Meanwhile as early as the 1970's General Hospital had felt tremendous pressure to expand into the neighborhood.

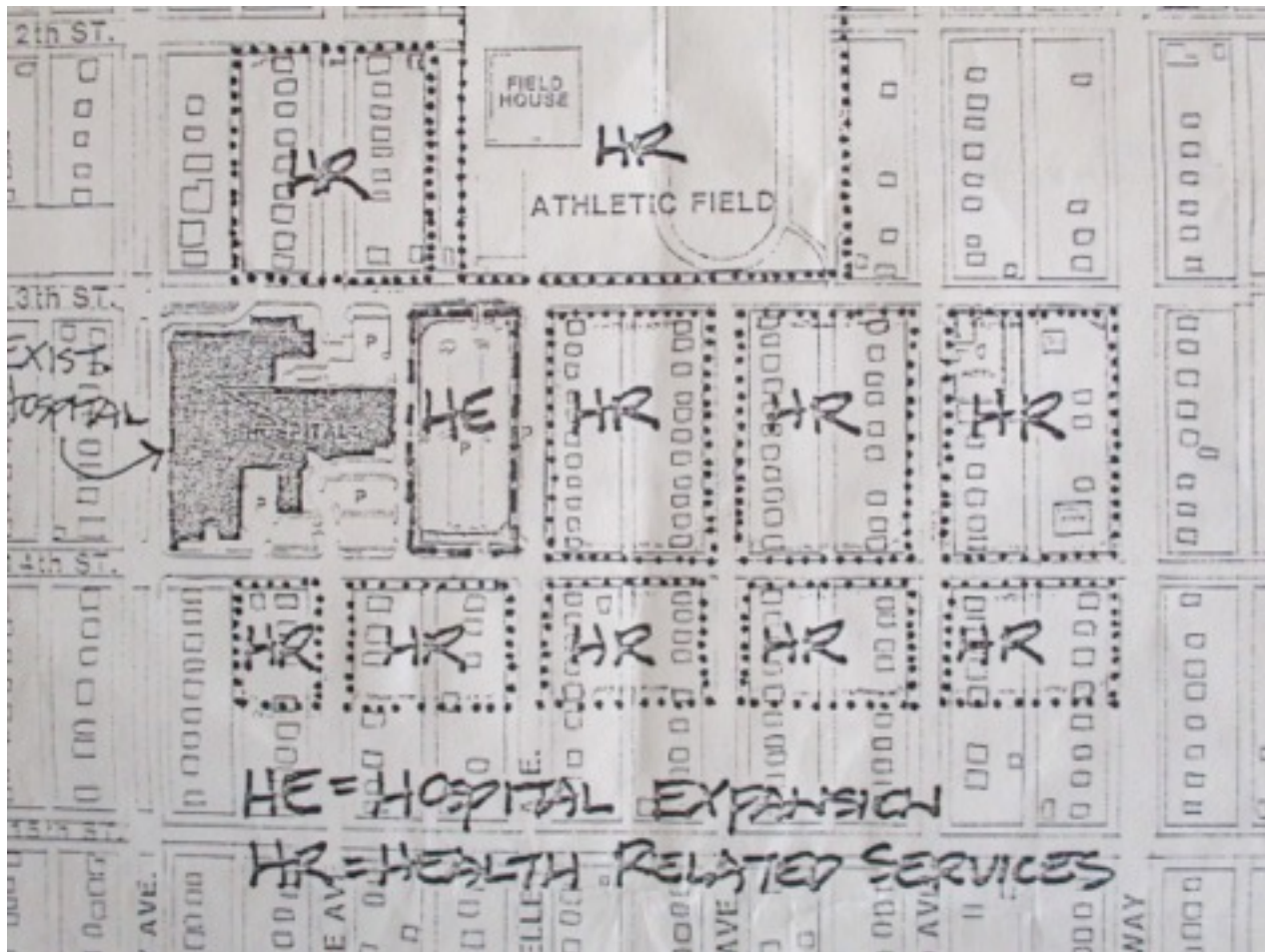


Some plans considered going both south across 14<sup>th</sup> as well as east toward Broadway.





Long range planning examined going east all the way to Broadway, plowing right through the Donovan District.



Tension from the hospital's need to grow and the neighborhood's fight to preserve its character would continue for years, and the hospital needed our support.

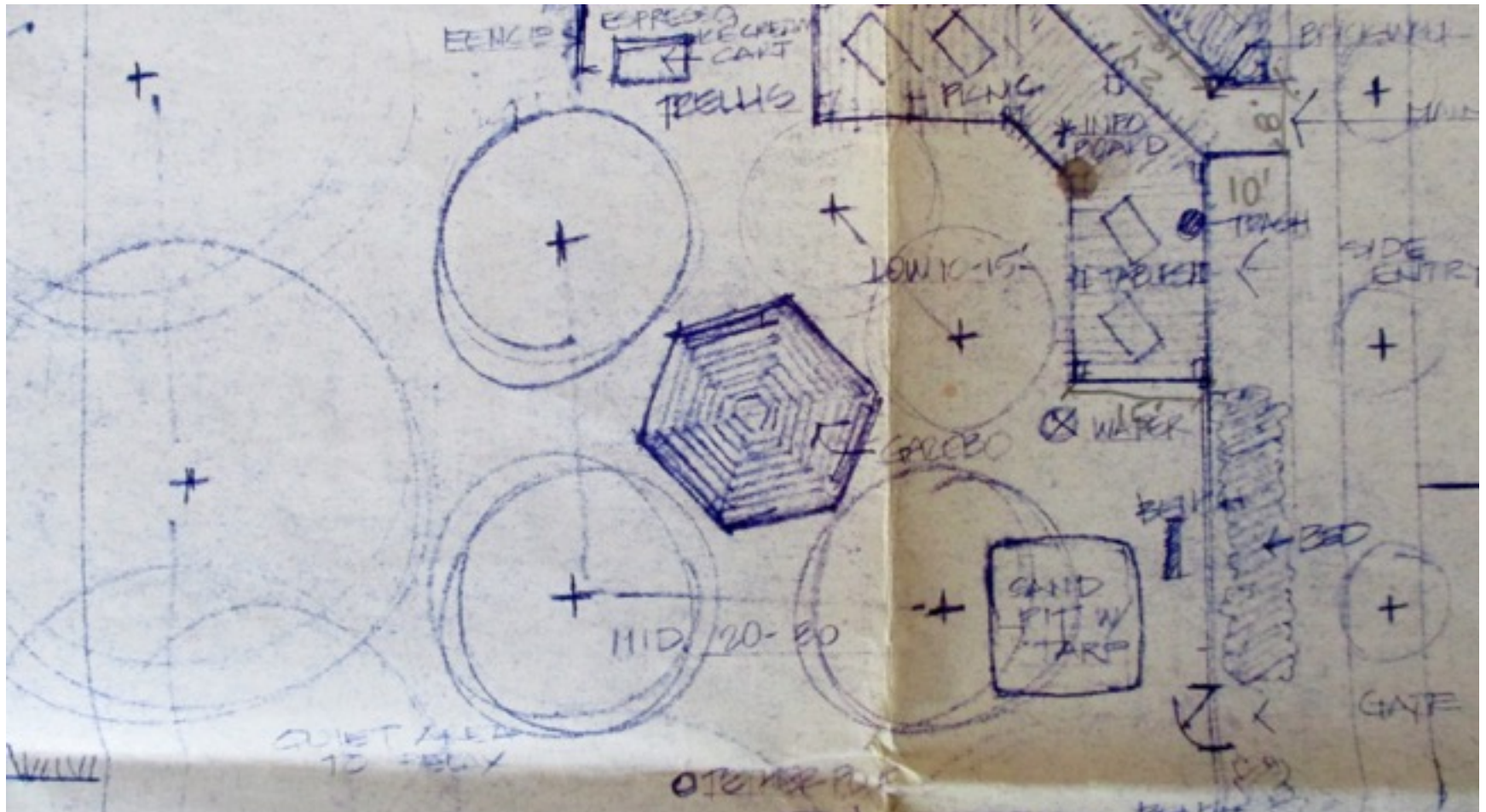


Working with Jane Farrar from the General Hospital Foundation, Drew Nielsen and other leaders negotiated a plan to use the 13<sup>th</sup> and Colby property on a year-to-year basis as a neighborhood park.

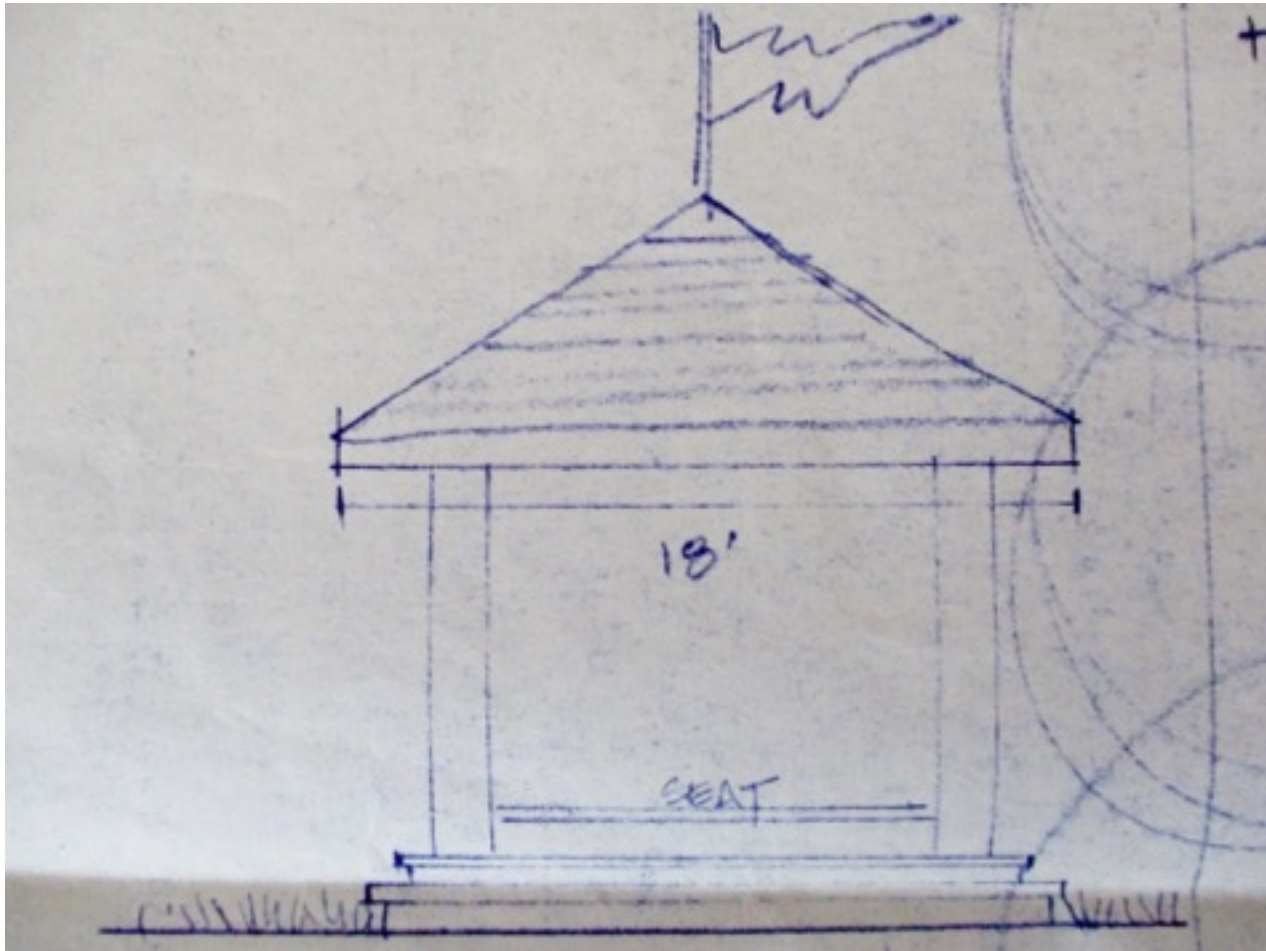




Park plans were drawn up by Hap Wertheimer, a young mother, neighbor and landscape architect.

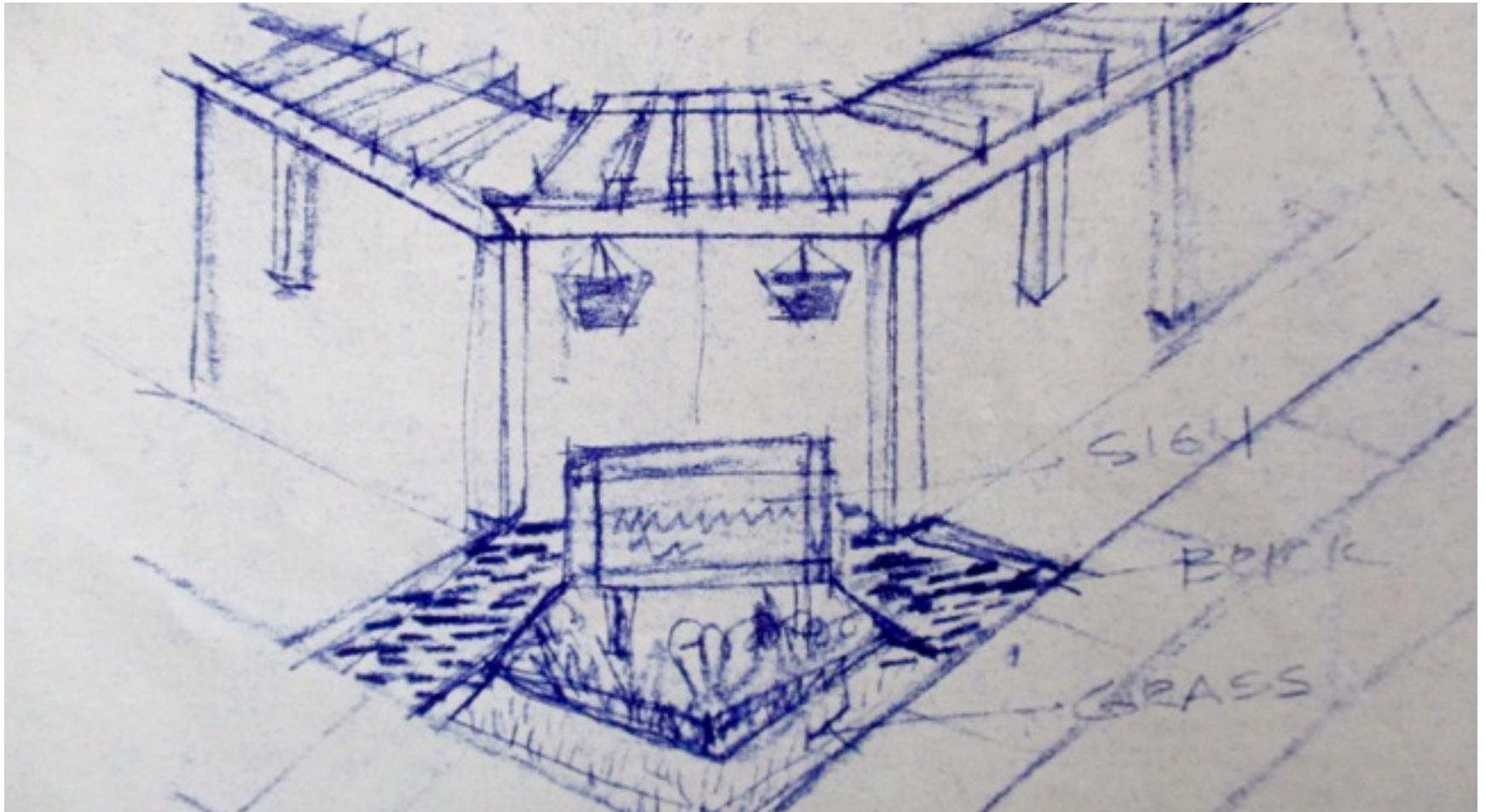


Jerry Smith designed a gazebo as a central feature of the park.





Falken Forshaw designed the pergola that would mark the corner of Colby and 13<sup>th</sup>.



T-shirts with the park design were made and distributed throughout NW Everett.



Others wore t-shirts showing the neighborhood.





Using money from our first mini-grant, neighbors purchased and installed the first play equipment.





They also built the gazebo and pergola. Soon families could enjoy the reclaimed space as a real park.



Drew Nielsen presented our park to the 1992  
Neighborhoods USA Conference in Anchorage, AK.



Word came that our park was a national finalist in the category of neighborhood improvement.





Not long after we learned that the NW Everett Neighborhood had won 2<sup>nd</sup> place!

### **NW Everett neighborhood wins national honors**

The NW Everett Neighborhood won the second place award in the Neighborhood Physical Improvement category at the national conference of Neighborhoods USA held recently.

The neighborhood was honored for the NW Everett Community Park on Colby and 14th Street. The park was a community effort which includes picnic tables and playground equipment.



Much would lie ahead for the new neighborhood association. Some of the challenges and opportunities included:

- Dealing with the arsonist Paul Keller
- The ASARCO arsenic abatement plan
- The hospital threat to to the Donovan District
- The land swap between the hospital and college (Drew's idea)
- Dealing with the asphalt plant on the point
- A bridge to the waterfront (Drew's idea)
- Fighting prostitution around Broadway
- Everett Community College expansion
- The completion of Everett Naval Station

**These are stories yet to be told about the NW Everett Neighborhood.**

Drew Nielsen became President of the Council of Neighborhoods.  
He also served on the Everett Planning Commission and Tree  
Committee.



Both Mark Soine and Drew Nielsen would serve on Everett's City Council



On May 12, 2012 Drew tragically died doing what he loved: white water rafting with his 2<sup>nd</sup> wife Kim.





In 1992 Susan Russell was the Arts Council of Snohomish County's first Artist of the Year. After teaching art for many years in Snohomish, Marysville and Lake Stevens, Susan died May 14, 2017 at her home in Portland, Oregon, after a long battle with cancer.





"Never doubt that a small group  
of thoughtful, committed

**citizens**

can change the world:

indeed it is the only thing  
that ever has."

Margaret Mead

The City of Everett, Washington

